



Queen Elizabeth II
21/04/1926 - 08/09/2022



It is with great sadness we learned of the sad news that our great Queen, Her Majesty Queen Elizabeth II passed away on Thursday, 8th September 2022. She died peacefully with members of her family present at Balmoral in Scotland.

It is remarkable her great sense of duty compelled her to meet with Boris Johnson on Tuesday to accept his resignation, followed by a meeting with Liz Truss asking her to form a new Government. As ill as she was, she still performed her duties.

I am so glad she was able to celebrate her Platinum Jubilee on being our Sovereign for 70 years our longest ever Monarch. It is not long ago we were able to attend events to commemorate the momentous occasion and she inspired such a feel good factor across the Nation. She will be sadly missed.



I have sent a message of condolence on behalf of the Friends of Dover Castle and we have postponed upcoming events as a mark of respect, Graham Hutchison Chairman

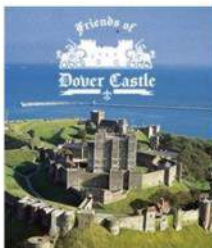


REARRANGED TIME CAPSULE EVENT

**FRIENDS OF DOVER CASTLE
DOVER COMMUNITY TIME CAPSULE**

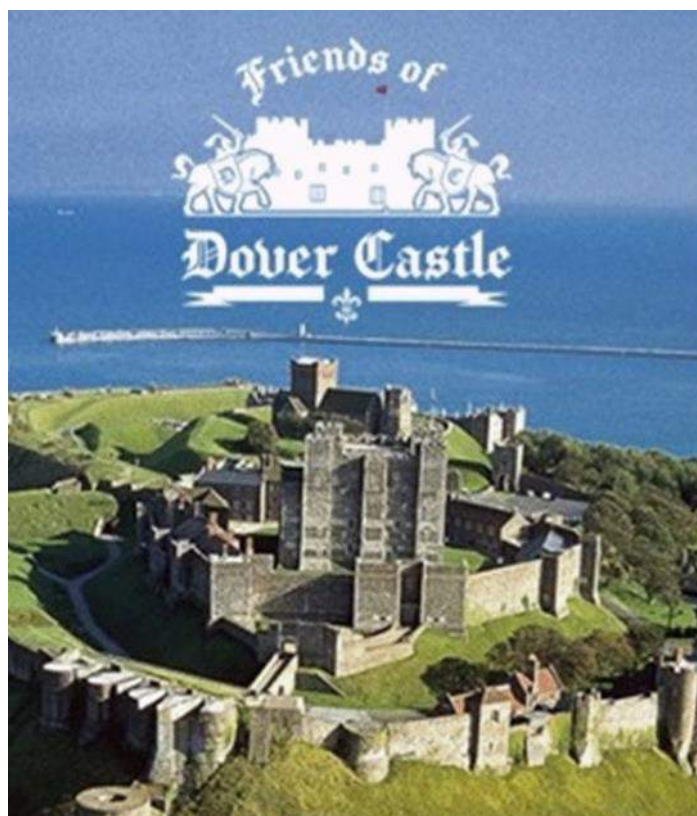


**Wednesday
9th November 2022
11.00 am
Riverside Centre
Dover**



MAISON DIEU





FRIENDS OF DOVER CASTLE

SUMMER / AUTUMN NEWSLETTER

SEPTEMBER 2022

This edition includes the recent AGM.

Editor. Graham Hutchison

AGM - news of important changes

KITCHEN GARDEN PROJECT - WOW !

Treasurers Tower - Some History

Invisible Castle - a great tour

Behind Locked Doors - a great tour

Accommodation ? - We are in !

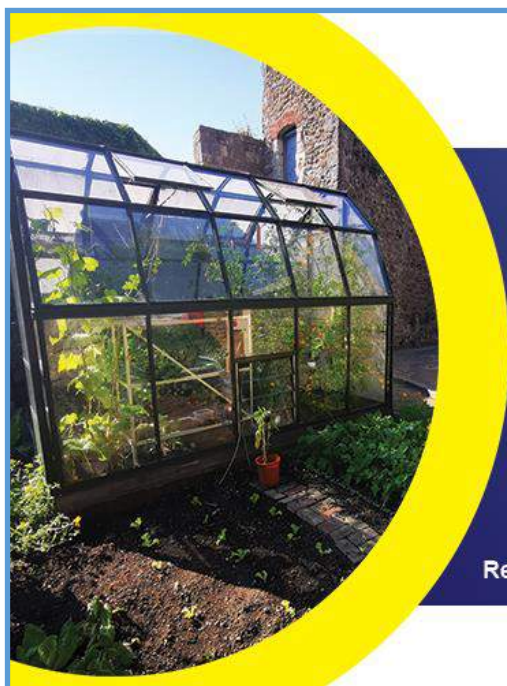
TIME CAPSULE - Update

Constables Tower Tour

Hurst Castle - well worth a visit

English Heritage Thank You – event

Commonwealth Games Baton Relay



FRIENDS of DOVER CASTLE

OPEN DAY

- Learn how we have restored and transformed the wonderful secret Kitchen Garden
- See Treasurers Tower -never open to the public
- Find out about the Friends of Dover Castle
- Plants and produce on offer

FREE to ENTER

Registered charity No. 298203



✉ chairman@dover-castle-friends.org

🌐 www.dover-castle-friends.org

www.dover-castle-friends.org

AGM : Saturday 30th July 2022

Our Annual General Meeting was held in Constables Tower on 30th July 2022. Even with the offer of a Cream Tea, unfortunately numbers were very low but we were honoured to have attend our President, Brigadier Guy Boxall MBE who is also the Deputy Constable of Dover Castle. We have not been graced with the presence of the Deputy Constable to our AGM's in living memory – if at all. Chairman Graham opened the meeting and invited Guy to make an opening speech, which he did highlighting the fact that Dover Castle were lucky to have us and how impressed he had been so far with our enthusiasm and dedication with special mention of the Kitchen Garden Project.

Graham gave his report via visual mode, with a PowerPoint presentation highlighting the fact that we continued to operate during lockdown whereas many similar Friends associations basically just ceased activities until things were back to some sort of normality. Graham tries to keep in regular contact with other "Friends" to share ideas etc.

Brian gave his Treasurers report which revealed a healthy balance and it should be noted that Brian baked the scones and provided the cream teas this year as Dover Castle catering team were heavily committed serving the Pirate Community (Special Event at the Castle).

Pauline advised we were seeing an increase in membership which now stands at 159 and there is an upward trend.

Resolutions passed:

Increase in membership subscriptions - Single - £30 increased from £27

Joint - £42 increased from £39

These new rates to apply from 1st April 2023 - there has not been an increase for several years.

Photo Identity was no longer required on Membership Cards - this will allow us to source more professional looking and eco friendly cards.

Treasurers Report was accepted and agreed to appoint current auditors again for this coming year.

The new committee as agreed

Chairman	Graham Hutchison
Vice Chairman	Mark Danson - nominated, proposed/seconded and unanimously agreed.
Secretary	Graham Hutchison - Appointed in order to comply with constitution and Charity Commission rules
Treasurer	Brian Rowland
Membership Secretary	Pauline Beresford
Hon. Vice Presidents	Wendi Atherton & Mike McFarnell
Committee members	Mark Danson, Pauline Danson, Dean Colling-Baugh, Yasmin Colling-Baugh, Sarah Hooper (new member elected)
Webmaster	Dean Colling-Baugh

In addition to Brigadier Guy Boxall MBE, attending were special Guests, Neil McCollum, Head of Historic Properties, South, who gave a very upbeat and positive talk about English Heritage and Dover Castle plans. We also had Jack West-Sherring, a member of His Majesty's First Foot Guards 1815 - a group of costumed re-enactors who perform regularly at Dover Castle who Graham had invited to give as a brief talk about the group.

Jack told us a little bit about their history and his involvement and how they are currently teaching music to children including playing the drums, the fife and bugle. We agreed we would communicate regularly with each other and hopefully organise some joint events or activities.

New Vice Chairman then gave a talk about the **Kitchen Garden Project** and showed a video of time lapse images of the project and attendees were all invited to have a look at the Kitchen Garden. Mark and Pauline have done an amazing job transforming this barren and unused secret garden. It is a great example of what we can do.

KITCHEN GARDEN PROJECT



Our Gardening stalwarts - Mark and Pauline Danson.



They have been assisted by Wendi Atherton, who lived in Constables 1976—1981 as wife of Brigadier Maurice Atherton the then Deputy Constable. Wendi has been able to advise on what previously was grown in the garden and where.



August Bank Holiday weekend provided an ideal time to open up the garden to visitors. Mark and Graham are seen here having a deserved time out in the new Arbour which was installed on the Friday beforehand! Graham is seen in his WW1 re-enactment attire as he was combining roles of Gun Drill with volunteering at the Open Days.

Lots of members, castle visitors and staff visited us and were amazed at what this project was achieving.



A favourable consequence of us taking over the Kitchen Garden was that hidden by the Garden is Treasurer's Tower which, even though effectively a "ruin" is one of the key Towers of the outer curtain wall. This Tower is never open or accessible to the public - **well it is now !** and when we open up the garden or hold open days we show it off to visitors and Friends alike. It has a remarkable history and we are researching it so that we get the story right.



We give a bit of our research on the next page and we aim to produce an Information Sheet to hand out during Open Days. Graham spent a few hours before our last Open Weekend cleaning and tidying it up, to make it safe and suitable to show visitors - he needed a face mask due to an abundance of bird droppings.



A lovely Sunflower

We were left a usable Green House .



There was still ash present in the fireplace - could this be residue from when a jealous scoundrel named Levenste burned Castle records during the 15th Century all because he was not made Governor!





Regardless of what this Tower was used for, it is evidently an important building due to the many Archery Windows - Loopholes. Archers were the most highly paid of soldiers. You can see from this image that there would have been at least 2 floors and there is a door from the upper floor which leads to the Rampart Walk which leads to Constables Tower itself.

Some records show that it was built by John De Finnes the Constable of Dover Castle 1111—1138 but it appears from research that this constable perhaps never existed and was made up by later descendant's creating a fake history..

We know that Hubert de Burgh was responsible

for saving Dover Castle from Prince Louis of France who was supporting the rebel barons against hated King John, holding a siege of the Castle in 1216 and that Hubert rebuilt Constables Tower and made it the largest Gatehouse of any fortification in England. There is lots of evidence stating Hubert built much of the Outer Curtain Wall and it's Towers, including Treasurer's Tower. It has had many names over the centuries, such as Clopton Tower, after Clopton Manor in Norfolk, whose Knight was given Knights fees to guard Dover Castle. It has also been named Cobham's Tower after Baron Cobham, and Richmond Tower after the Duke of Richmond who was Constable in 1641.

When William the Conqueror became King of England he appointed relatives and friends from his native Normandy into powerful roles, such as his half brother Odo of Bayeux became Earl of Kent. Land was granted to Normans on condition they provided Knights and soldiers to form armies when William needed but also provide a garrison for the Castles he set about building. This feudal system was prominent in Normandy and William instilled it in England. In researching the History of the Towers and Dover Castle, the Knights or Barons given land were said to be given so many Knights Fees, such as the Constable receiving 56 Knights fees. The Feudal system did not work perfectly and often, instead of Barons providing knights and soldiers, they would pay the King the equivalent of providing a garrison and based on the value of land they had been given. More research is being done - so watch this space

SPECIAL THANK YOU TOUR. English Heritage organised a special event on Wednesday 7th September 2022

The Tour commenced in Constables Tower and took in Peverell's Gate and carried along the outer curtain wall taking in Godsfoe's Tower and the Northern Towers



We learned about Galleting and the importance Gatehouse of any fortification in England.

Galleting

of Constables being the largest

In recognition of the Friends of Dover Castle and how well we promote and support Dover Castle, Neil McCollum and Hannah Jackson, the Regional Partnership's Manager, got together to organise as special event for us. Twenty members attended this special Tour.

We were treated to a very interesting Tour, which was led by Property Steward Titus who is impressively knowledgeable, not just about Dover Castle History but also History in general. He was able to give us a different local and National perspective of parts of the Castle which we have seen before and some we had not.



Titus explained the importance of Dover Castle in terms of the whole of England and the importance of the various towers and the Knights they were named after. Inside Constables entrance is a long heavy hook which would need to be carried by quite a few men but was basically a fire hook, used to remove burning materials which had been lobbed into the Castle by marauders. There would have been hundreds of people living inside the Castle walls at the time, in tents or wooden accommodation - vulnerable to fire.

Towards the North Towers which were breached during the siege of 1216, is the remains of Godsfoe's Tower which is still quite impressive but there would have been a large hall where the trebuchet is now situated and thus this building would have been very impressive. It is thought to have been part of King John's Tower fortifications

We finished the afternoon with a lovely Afternoon Tea, now is it jam first or cream first?

It is hoped this will be the start of closer working relationships with central English Heritage to mirror the close relationship we have developed with Dover Castle management and staff.



WE HAVE 160 MEMBERS - HELP US GET TO 200



**Platinum
Jubilee
Tours**

Invisible Castle

**Special Free Members Tour
Saturday 11th June 2022
11.00 am**

What the Castle was like hundreds of years ago.
This is a unique Tour not available to members of
the public.

This will include outside areas so please dress for
the weather and wear appropriate footwear.



**It hasn't always looked
like this.
Romans had a hill-fort here.
Then came Angles and Saxons
then the Vikings
then the Normans**

**Book online.
Limited numbers.
www.dover-castle-friends.org**

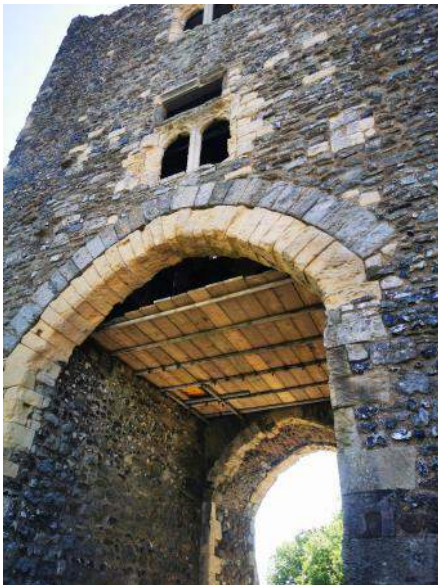
A different and unique tour was developed and led by volunteer Bruce who awakened our imagination to look at the Castle as if we were back in pre-medieval times.



We started at the Ticket Office car park and Bruce explained how the hill fort would have looked at in Roman times and what the fort and encampment would have been used for. I have walked down this lane, carved out of chalk, many times but not always taken the time to look at the chalk and carvings.



Bruce described how the chalk was hewn quite deliberately and as a means of quick access from encampments at the top to lower parts and ditches.



Bruce explained how the walls around the Palace Green Car Park have previously had gates leading to other roads, pathways and access routes. The towers and gateways gave several levels of protection. Bruce also

explained how the banks did not just evolve but were built as pathways and there would have been wooden constructions before the stone built towers which remain now. The tour also took in the Church and Roman Lighthouse and Bruce told us how there would have been a guard tower and look out as well and the Lighthouse - the oldest building still standing in mainland England was also used as a bell tower at some point in its life. St Mary-in-Castro Church is one of the most complete Saxon buildings in the UK, dating from 630 AD and surveys suggest it was built on top of a previous Roman building and Roman tiles have been found during excavations.



Look at that amazing Blue Sky.



CONSTABLES TOWER - TOUR

One of our popular tours has always been Constables and we once again were treated to another great experience lead by Property Steward Len who was knowledgeable and humorous. Disappointingly, the tour was only supported by a small number of

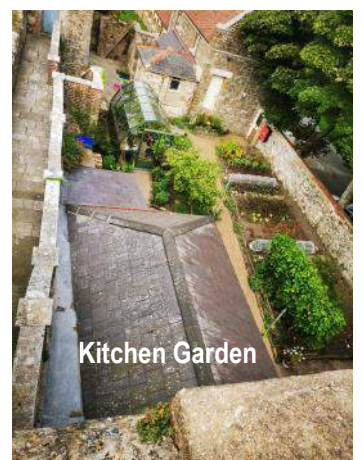


Elegant Entrance Hall

members, but we did have former resident Wendi Atherton and her daughter Christine in attendance. Christine was a teenager when they lived here from 1976 to 1981 as Brigadier Atherton was Deputy Constable. Christine recounted the "Daughter's" bedroom she occupied but says the Love mirror must have been added later as she did not remember it. Her own daughter Harriet, who accompanied her on this tour, was fascinated to discover where her mum and grandmother had lived in Dover Castle. We all enjoyed the reminiscing.



Rampart Walk above Garden



Kitchen Garden



Len let us wander around Constables and even up to the roof where the views were incredible, including of our Kitchen Garden Project.

Len advised us that the Constables Bastion or Bulwark which would have protected the entrance to Constables but has been used as a Tennis Court, play area, vegetable garden and pet dog cemetery.



Bastion

Constables Tower has so much History, dating from Hubert de Burgh , who following the siege of 1216 where the French undermined the Northern Entrance Towers, wanted to build an almost impenetrable single entrance Gateway and so Constables Gate was built, together with formidable curtain walls. Repairs and additions have been made over 800 years and you get a real sense of history each time you step inside.

Plans are to make Constables more accessible and use it more but this may take some significant investment that English Heritage at this stage do not have.



FRIENDS ACCOMMODATION

After many years of asking, we have finally achieved our aim of having our own accommodation within the Castle grounds.

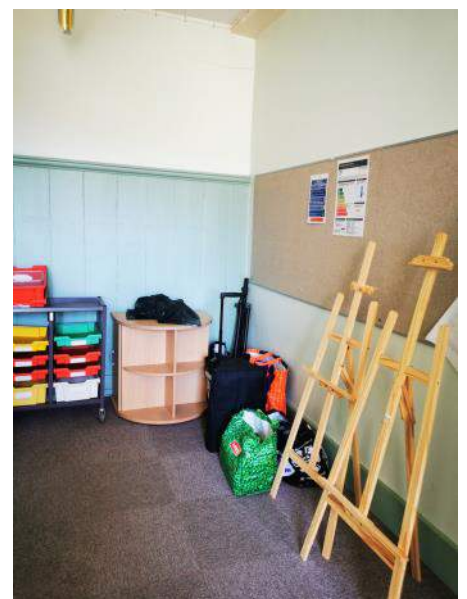
We have been allocated the office space in the ground floor of the Education Suite building in the far corner of the Keep Yard. This consists of 2 rooms and Becky is leaving furniture which includes desks and comfy chairs as well as a Fridge and Microwave. There is access to a sink and running water across the entrance corridor. Mark and I visited this and think it will be ideal for committee meetings, space for storage and open days to attract new members and to us as a base.

We need to have a meeting with Becky and Neil to agree the terms of our occupation and Castle Staff will need to be able to use it on occasion but it will basically be our bolthole within the Castle and enable us to become more effective in our support of Dover Castle.

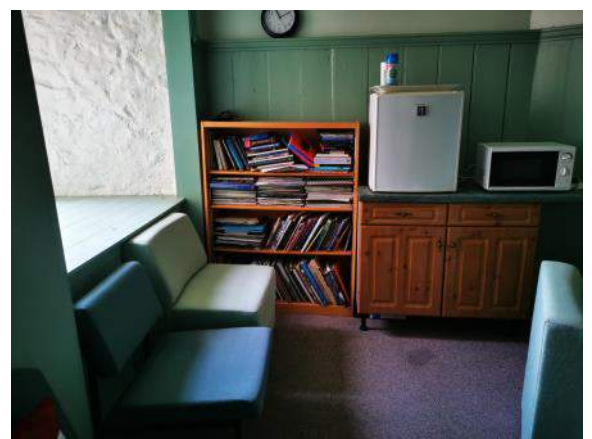


In the main room there are 2 office desks with swivel chairs, filing cabinets, storage cupboards and a long notice board. In the next room there are easy chairs, coffee table, shelves, storage cupboards, whiteboard and a fridge and microwave. The Education Team still have a few things of theirs here but the important thing is that we are finally in somewhere to call home!

I am going to try to set up an early meeting so we are able to start using the rooms as soon as possible. Oh, and there is accessible Wi-Fi here.



H
O
M
E



COMMONWEALTH GAMES BATON RELAY JULY 2022

Dover Castle has been involved in many important events happening in the UK, and having this great Castle must surely help Dover bid for hosting such events. Back in 2012, the Olympic Torch Relay had the Castle firmly in it's route and the Birmingham Commonwealth Games this year required a relay and again Dover Castle was chosen as part of the relay route. In 2012, each relay runner had their own Olympic Torch and the flame was passed from one to another but the Commonwealth Games had just one baton which contained the Queen's Message to the Commonwealth and the baton was passed on between the runners.

Children in Dover were invited to enter a competition to design the Baton Relay flag and 11 year old **Izzy Kirby** was the winner and her flag was produced to fly from the Castle flagpole with a 1000 smaller replica's produced for people to hold and wave at the relay members as they passed through the Castle.

Dover's **Ruby Hamilton** was the day's final Baton bearer



as it passed through Dover .



Chairman of DDC Mike Conolly and Dover Town Mayor, Gordon Cowan were two of the speakers at the event. Local group **Gentlemen of Few** and singer **Rudie Edwards** performed from the stage. 2500 Free tickets had been allocated to people in the community, which was dubbed a Free Party.!



A performance by the local Vista Twisters enthralled the audience with one dancer summersaulting over Ruby and the baton. A Gun salute boomed from one of the Castle's 25 lb guns and the event fished with the Band of the Princess of Wales Royal Regiment .



Vista Twisters performed at the World Championships in America and won 2 top 10 finishes

FORTHCOMING EVENTS AT DOVER CASTLE

HALLOWEEN at Dover Castle - Half Term 22nd October to 30th October 2022



[Halloween Half Term at Dover Castle | English Heritage \(english-heritage.org.uk\)](https://www.english-heritage.org.uk)

GHOST TOURS

SUNDAY 30TH AND MONDAY 31ST OCTOBER 2022



[Ghost Tours at Dover Castle | English Heritage \(english-heritage.org.uk\)](https://www.english-heritage.org.uk)

Adults and 16 + only - various times from 5.30 pm Additional charges apply

Details courtesy of English Heritage

www.english-heritage.org.uk

HURST CASTLE



I have been wanting to visit Hurst Castle for ages and I have been communicating with the Friends of Hurst Castle for a few years and I finally made it down there this summer. It is an artillery fort on the Hurst spit, established by Henry VIII as part of his improvements to coastal defences and protected the west Solent. There is access along the spit, if you are able to walk, or by ferry from Keyhaven, which is the route I took. It was a pleasant 15 minute or so sailing which drops you right at the entrance to the Castle which is basin side.



Hurst Castle consists of a central Keep with bastions either side. At one time it had 61 gun positions. The largest of which were 38 tonne rifled-muzzle loading guns, which are still in situ!



The High Point Lighthouse at Hurst was built in 1867 and automated in 1923.. It was built by Trinity House who operate it from their planning centre in Harwich.

In 2021, the Castle suffered a huge wall collapse which has meant English Heritage have had to close the East Wing to visitors and surveys have meant that the

West Wings and some other areas have had to be closed to visitors due to being deemed dangerous. You can see how much beach had been eroded between these two photograph's which led to the collapse.

This has had an adverse impact on the Friends of Hurst Castle as they are now unable to do much of what they were doing prior to the collapse. They will be voting on their future at their AGM in November. I will be writing a letter of support to them and sharing ideas.



BEHIND LOCKED DOORS

Another popular tour is our Behind Locked Doors Tour and the irrepressible Property Steward Len took us on another very different tour. We were free to explore the Officer's New Barracks, The Debtor's Prison and the King John Northern Towers Casemates - somewhere we have not been in before.



Have you seen these views before ? Probably not. Make sure your membership is up to date so you are able to access the many tours and events we organise - all free! With grateful thanks to Becky and her staff who facilitate these for us.

English Heritage have undertaken a lot of conservation work in the norther casemates ahead of plans to open up the northern area including the Spur with the installation of interactive interpretations and introducing more visitor attractions here.

MEMBERSHIP:

I have been asked several times recently about eligibility to join The Friends as an English Heritage Member.

Full members of English Heritage are able to join the Friends of Dover Castle for the greatly reduced rate of only £6 for singles or £10 joint membership. This rate only applies whilst full English Heritage membership is valid which means if you allow your English Heritage membership to lapse you no longer are eligible for the reduced rate. We are required to assure that we only grant this rate to eligible members. In future we will need in addition to your English Heritage membership number, the expiry date. This will enable us to check if EH Membership is renewed allowing the reduced Friends rate to continue to apply.

Corporate membership. It has come to our attention that some members have thought they were eligible for the English Heritage Members rate when in fact they are not full members but enjoy free entry to English Heritage sites. I have had it confirmed that whilst being members of other organisations may benefit people with free entry to English Heritage sites they are not full members of English Heritage and as such do not qualify for the reduced rate. So please, only apply for Reduced Rate membership if you are full English Heritage members.

If we have made mistakes in the past and granted reduced rates to ineligible members we are not about to seek reimbursement, but from now on we will have to ensure only eligible members are granted the reduced rate.

GREAT BENEFITS

Please be reminded that membership of the Friends offers great benefits at a great price and includes free entry to Walmer and Deal Castles, Richborough Fort and St Augustine's Abbey during off peak season, November to March.



I appreciate sites will be on Off Peak opening hours which basically means open only on weekends but get yourself over to these sites to enjoy free entry. Please also note that Richborough Castle is currently closed whilst the Richborough: Gateway to Britannia Project is completed. [Richborough: Gateway to Britannia | English Heritage \(english-heritage.org.uk\)](https://www.english-heritage.org.uk/richborough-gateway-to-britannia/)

DOVER LOTTO We are still part of the Dover Lotto and this brings in valuable funds to our charity.

Remember every £1 ticket you buy gives us 50 p and it is easy to sign up. [Dover District Lotto: Easy online fundraising for good causes - Dover District Lotto \(doverlotto.com\)](https://www.doverlotto.com/) www.doverlotto.com

Remember to nominate us as the good cause you support so that the funds come to us.

WE NEED MORE SUPPORTERS - BUY TICKETS TODAY PLEASE

